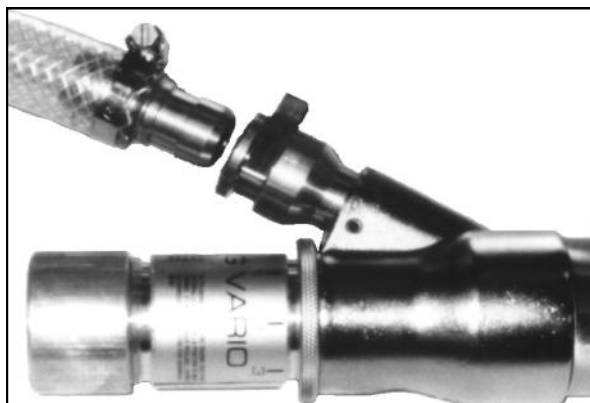


www.kbm.dk



# INJEKTORKING VARIO

## EPS/EPP/EPE/ARCEL



INJEKTORKING VARIO EPS with steplessly variable adjustment of the air volume and with quick clamp for the material hose.



INJEKTORKING VARIO TURBO/COMBI with steplessly variable adjustment of the air volume and with quick clamp for the material hose.



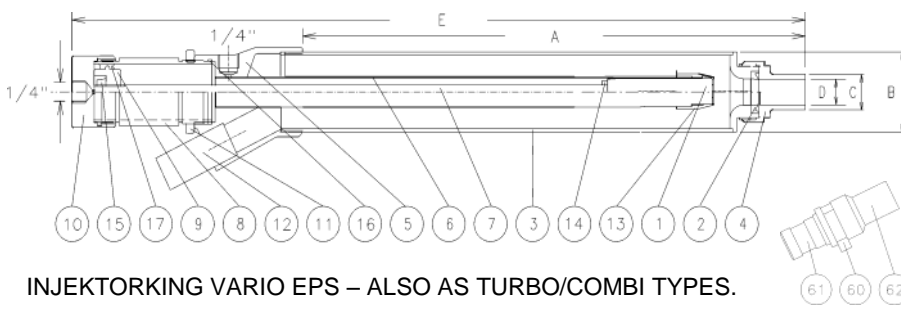
KBM APS  
DK 3400 HILLERØD  
TLF.+45 4826 8090  
Homepage: www.kbm.dk

VØLUNDSVEJ 13  
DENMARK  
FAX.+45 4826 8016  
e-mail: kbm@kbm.dk



The INJEKTORKING VARIO INJECTOR for EPS and the TURBO/COMBI for EPS, EPP, EPE and ARCEL:

- **MINIMAL AIR CONSUMPTION:** By maximum setting on our injectors, air consumption is less than half of the air consumption of most other major suppliers of injectors.
- **STEPLESS VARIABLE ADJUSTMENT** of the air volume, means that you never need to introduce more air, than you need to fill the mould. And consequently you reduce the need for venting of the mould.
- **It takes 30 seconds to change the tip to another diameter tip and tips are available in all sizes from 18-36 mm.**
- **Built-in "blow back on time" after closed function.**
- **Simple design and extremely little maintenance:** To change all wear parts (**TWO SEALS**) takes 3 minutes. All parts are dismantled by hand without use of tools at all.
- **To change the U-seal, which is the only seal inside the steam chamber takes 15 seconds.**
- Especially designed, also for use with **pressure filling systems**, allowing **optimal filling**, also of thin-walled sections.
- **Quick clamp** for material hose available (see small photo on front page). Standard for 22 (7/8"), 25 (1") and 32 mm (1 1/4") hoses.



1. Piston plunger
  2. U-seal
  3. Outside barrel
  4. Tip
  5. Casing
  6. Inside barrel
  7. Piston shaft
  8. Air cylinder pipe
  9. Piston
  10. Air cylinder cap
  11. Counter nut
  12. Feed pipe
  13. Air orifice
  14. Nut
  15. Self-locking nut
  16. O-ring
  17. Double lip seal
  20. Spring
  21. Spring base
  22. Spring nut
  23. Piston sleeve
  24. Set screw
  25. Cylinder connector
  26. Air cylinder pipe
- Quick clamp:**  
60. Clip  
61. Hose stub  
62. Connecting piece

INJEKTORKING VARIO EPS – ALSO AS TURBO/COMBI TYPES.

**ALL TYPES ARE AVAILABLE AS EPS AND TURBO/COMBI (EPS, EPP, EPE, ARCEL)**

TYPE	A	B	C	D	E	F	
330/40/18-36/16	330mm	40mm	18-36mm*	16mm	490mm		
330/40/18-36/16/100	330mm	40mm	18-36mm*	16mm	690mm	100mm*	
530/40/18-36/16	530mm	40mm	18-36mm*	16mm	690mm		
530/40/18-36/16/100	530mm	40mm	18-36mm*	16mm	890mm	100mm*	
330/42/18-36/16	330mm	42mm	18-36mm*	16mm	490mm		
330/42/18-36/16/100	330mm	42mm	18-36mm*	16mm	690mm	100mm*	
530/42/18-36/16	530mm	42mm	18-36mm*	16mm	690mm		
530/42/18-36/16/100	530mm	42mm	18-36mm*	16mm	890mm	100mm*	
430/42x1,5/18-36/16	430mm	42x1,5	18-36mm*	16mm	640mm		EPP only
430/42x1,5/18-36/16/100	430mm	42x1,5	18-36mm*	16mm	840mm	100mm*	EPP only
230/50/18-36/16	230mm	50mm	18-36mm*	16mm	390mm		
330/50/18-36/16	330mm	50mm	18-36mm*	16mm	490mm		
330/50/18-36/16/100	330mm	50mm	18-36mm*	16mm	690mm	100mm*	
430/50/18-36/16	430mm	50mm	18-36mm*	16mm	590mm		
530/50/18-36/16	530mm	50mm	18-36mm*	16mm	690mm		
530/50/18-36/16/100	530mm	50mm	18-36mm*	16mm	890mm	100mm*	
330/50/22-36/20	330mm	50mm	22-36mm*	20mm	490mm		EPS only

\* Exchangeable tip. - It takes 30 seconds to change size.  
\*\* Built-in Ejector movement.

Feed pipes for EPS: 22 (7/8") or 25mm (1").

Quick clamps for EPS: 22 (7/8"), 25 (1") or 32mm

Quick clamps for TURBO/COMBI: 20-22mm (3/4-7/8"), 25 (1") or 32mm (1 1/4").

**The INJEKTORKING VARIO EPS**

is calibrated for a minimum of 60 l/min air consumption at 6 bar. This is equal to 159 Nominal l/min.

$$(NI/Min = \sqrt{\text{Bar} + 1} \times \text{air volume})$$

Example: 60 l at 6 bar:

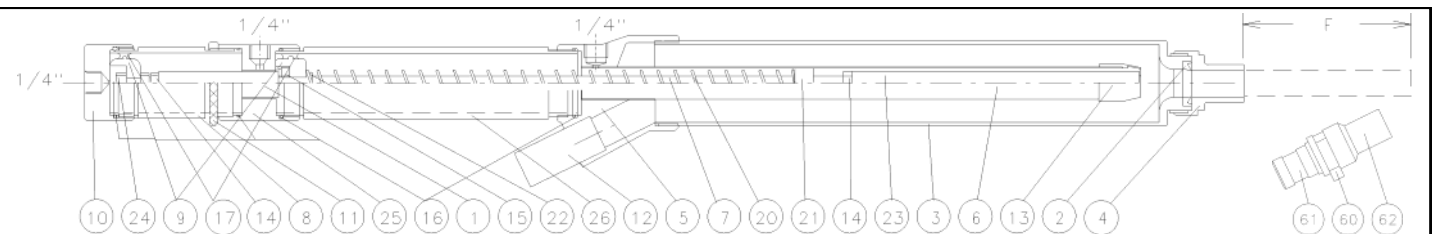
$$\sqrt{6 + 1} \times 60 = 159 \text{ NI/Min}$$

One position adjustment on the scale is equal to approx. 15 l/min.

The TURBO/COMBI version is calibrated for a minimum of 100 l/min air consumption at 6 bar and a max. air consumption of 260 l/min.

Standard packing: Carton with 12 units.

*Subject to alterations*

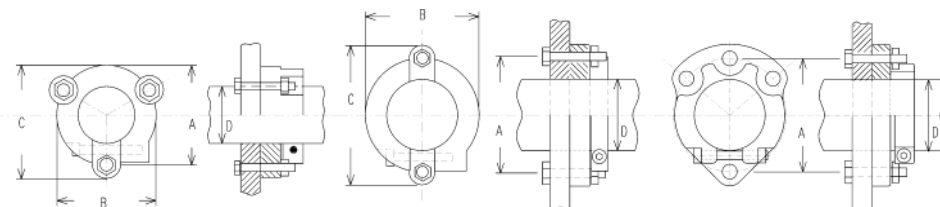


INJEKTORKING VARIO EPS WITH EJECTOR –GFG ALSO AS TURBO/COMBI (EPS, EPE and ARCEL) TYPES.

Clamp ring 40 and 42 mm with 3 holes.

Clamp ring 40 and 42 mm with 2 holes.

Clamp ring 50 mm COMBI



Type	40/2	40/3	42/2	42/3	50 Combi	
A (mm)	70	70	70	70	78-80	
B (mm)	70	70	70	70	Erlenbach hole configuration	Kurtz hole configuration
C (mm)	90	80	90	80		
D (mm)	40	40	42	42	50	
Holes	2	3	2	3	2	3