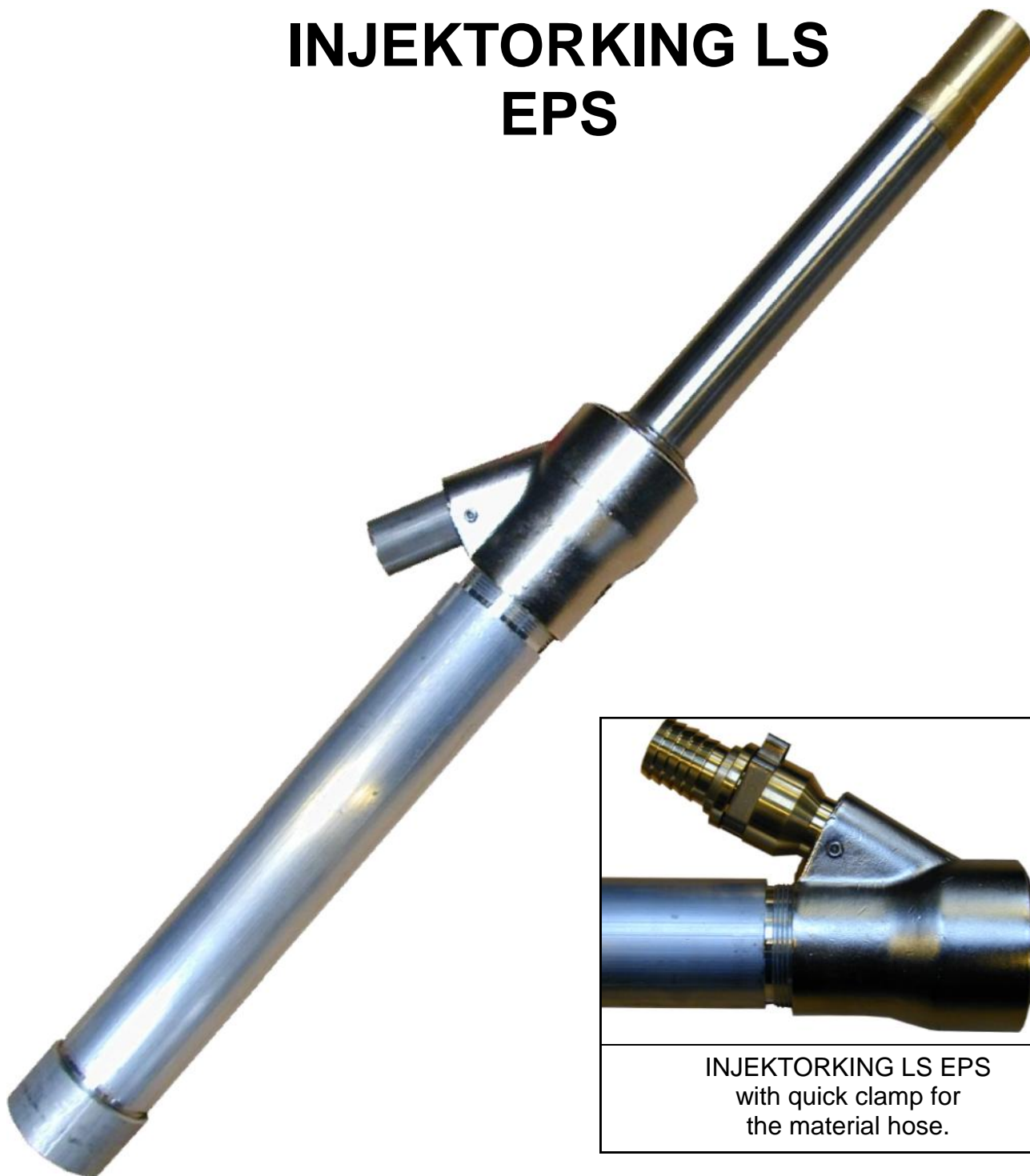


www.kbm.dk



INJEKTORKING LS EPS



INJEKTORKING LS EPS
with quick clamp for
the material hose.



KBM APS
DK 3400 HILLERØD
TLF.+45 4826 8090
Homepage: www.kbm.dk

VØLUNDSVEJ 13
DENMARK
FAX.+45 4826 8016
e-mail: kbm@kbm.dk



The INJEKTORKING LS INJECTOR FILLER for EPS with long stroke offers the following advantages:

- Especially designed, also for use with pressure filling systems, allowing optimal filling, also of thin-walled sections.
- Very solid design with barrel, piston sleeve, piston shaft and feed pipe made of stainless steel.
- Low weight ensures that no parts are damaged due to the weight of the injector when it is mounted in the mould.
- Very simple construction and extremely little maintenance, with all parts to be dismantled by hand without using tools at all.
- Change of teflon U-seal takes only 1 minute (the only seal, which is influenced by the steam), also without use of tools. To change the only 3 wearparts (2 seals + 1 bushing) takes 5 minutes. No other parts to be changed.
- Built-in "blowback on time after closed" function.
- Quick clamp for material hose available (see small photo on front page).
- The INJEKTORKING LS is precalibrated for 130 l/min (4.6 CuFt/min) air consumption by 6 bar (87 PSI) pressure. This is equal to 320 nominal l/min (11.3 CuFt/min).

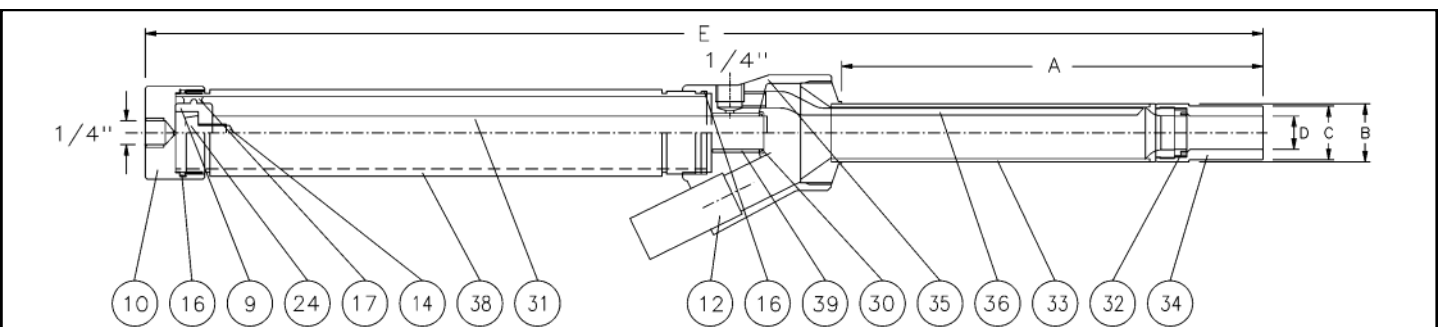
SUBJECT TO ALTERATIONS

| TYPES | A | B | C | D | E |
|--------------------------|-------|---|---------|------|--------|
| 200/28/10-26/08 | 200mm | 28mm | 10-26mm | 8mm | 545mm |
| 200/28x1,0/10-26/08 | 200mm | 28mm | 10-26mm | 8mm | 545mm |
| 300/28/10-26/08 | 300mm | 28mm | 10-26mm | 8mm | 745mm |
| 300/28x1,0/10-26/08 | 300mm | 28mm | 10-26mm | 8mm | 745mm |
| 200/28/14-26/12 | 200mm | 28mm | 14-26mm | 12mm | 545mm |
| 200/28x1,0/14-26/12 | 200mm | 28mm | 14-26mm | 12mm | 545mm |
| 300/28/14-26/12 | 300mm | 28mm | 14-26mm | 12mm | 745mm |
| 200/28x1,0/14-26/12 | 300mm | 28mm | 14-26mm | 12mm | 745mm |
| 200/28/18-26/16 | 200mm | 28mm | 18-26mm | 16mm | 545mm |
| 200/28x1,0/18-26/16 | 200mm | 28mm | 18-26mm | 16mm | 545mm |
| 200/28/18-26/16/110* | 200mm | 28mm | 18-26mm | 16mm | 820mm |
| 200/28x1,0/18-26/16/110* | 200mm | 28mm | 18-26mm | 16mm | 820mm |
| 300/28/18-26/16 | 300mm | 28mm | 18-26mm | 16mm | 745mm |
| 300/28x1,0/18-26/16 | 300mm | 28mm </td <td>18-26mm</td> <td>16mm</td> <td>745mm</td> | 18-26mm | 16mm | 745mm |
| 300/28/18-26/16/110* | 300mm | 28mm | 18-26mm | 16mm | 1020mm |
| 300/28x1,0/18-26/16/110* | 300mm | 28mm | 18-26mm | 16mm | 1020mm |

*Built-in 110 mm ejector movement.

Feed pipe for material hose (EPS): 22mm (7/8") or 25mm (1").

Quick clamp for material hose (EPS): 22mm (7/8"), 25mm (1") or 32mm (1 1/4").

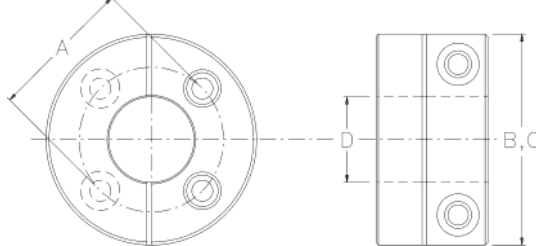


INJEKTORKING LS EPS

- | | | | | |
|----------------------|----------------------|---------------------|------------------|--|
| 9. Piston | 16. O-ring | 31. Piston sleeve | 35. Casing | Quick clamp: 60. Clip 61. Hose stub 62. Connecting piece. |
| 10. Air cylinder cap | 17. Double lip seal | 32. U-seal (teflon) | 36. Blow pipe | |
| 12. Feed pipe | 24. Set screw M8x30 | 33. Outside barrel | 38. Air cylinder | |
| 14. 2x Nut M8 | 30. Allen screw M6x8 | 34. Tip | 39. Bearing | |
| | | | | |

| Type | 28/4 |
|--------|------|
| A (mm) | 48 |
| B (mm) | 70 |
| C (mm) | 70 |
| D (mm) | 28 |
| Holes | 4 |

The LS injectors with 28 mm clamp ring can be used to replace injectors with barrel dia. up to 32 mm.



Quick clamps for material hoses 22, 25 and 32 mm.

